

D

C

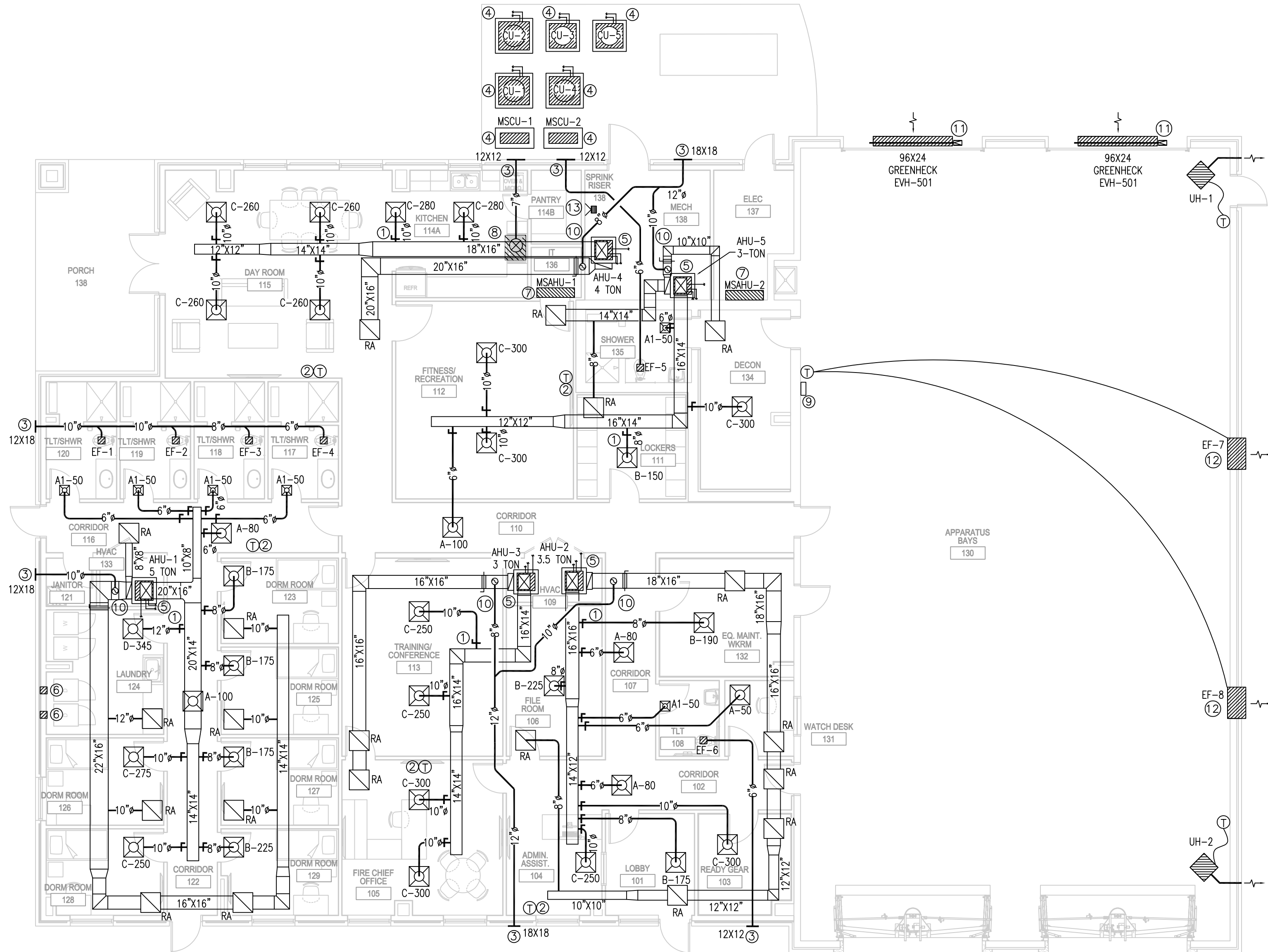
B

A

1 MECHANICAL PLAN

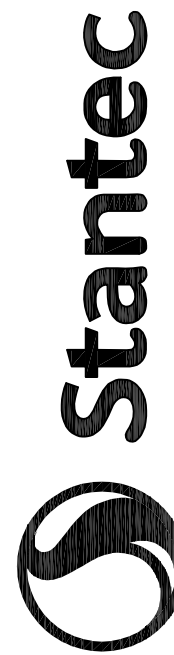
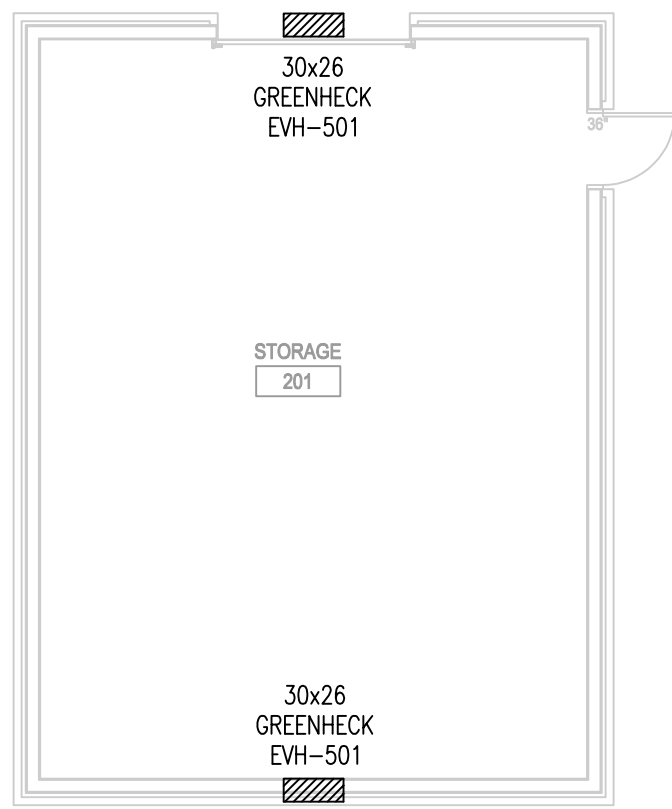
SCALE: 1/8" = 1'-0"

MECHANICAL LEGEND		
SYMBOL	ABBREVIATION	DESCRIPTION
	NTS	NOT TO SCALE
	AHU	AIR HANDLING UNIT
	CU	CONDENSING UNIT
	EF	EXHAUST FAN
	CFM	CUBIC FEET PER MINUTE
	RA	RETURN AIR
	FA	FRESH AIR
	SA	SUPPLY AIR
	EA	EXHAUST AIR
	B-250	DIFFUSER IDENTIFICATION, MECH SIZE-CFM
①	-	MECHANICAL PLAN NOTE
⊠	-	24"X24" R/A GRILLE W/ FILTER AND FILTER RACK
⇌	ODB	OPPOSED BLADE DAMPER
⊠	-	24"X24" SQUARE LOWEDED CEILING DIFFUSER
⊙	-	THERMOSTAT
⇌	-	MOTORIZED OPPOSED BLADE DAMPER



MECHANICAL PLAN NOTES:

1. AIR EXTRACTOR AND MANUAL VOLUME DAMPER WITH STAND OFF BRACKET AND LOCKING QUADRANT, TYPICAL FOR ALL DUCT LINE-OFF. SEE AIR EXTRACTOR DETAIL.
2. CONTRACTOR SHALL VERIFY EXACT LOCATION WITH ARCHITECT PRIOR TO INSTALLATION. PROGRAMMABLE THERMOSTAT/HAMMISTATS SHALL BE MOUNTED AT 60° A.F.F.
3. EXTERIOR EXHAUST/INTAKE LOUVER, SIZED AS SHOWN. REFER TO LOUVER DETAIL. COORDINATE EXACT MOUNTING HEIGHT WITH ARCHITECT. CONTRACTOR SHALL MAINTAIN A MINIMUM OF 12'-0" CLEAR BETWEEN ANY EXHAUST AND FRESH AIR INTAKE, NO EXCEPTIONS.
4. NEW CONDENSING UNIT MOUNTED ON 6" CONCRETE PAD. PAD SHALL EXTEND 4" ON ALL SIDES OF UNIT. CONDENSING UNITS MUST BE SPACED OFF OF ANY EXTERIOR WALL AND APART FROM ANY OTHER CONDENSING UNIT INSTALL IN ACCORDANCE TO MANUFACTURER'S SPECIFICATIONS. ROUTE INSULATED REFRIGERANT LINES TO RESPECTIVE AIR HANDLING UNIT. REFRIGERANT LINES MUST BE SIZED IN STRICT ACCORDANCE TO MANUFACTURER'S SPECIFICATIONS.
5. NEW AIR HANDLER IN CLOSET. SET SCHEDULE FOR SIZE & MODEL. UNIT MUST HAVE STAINLESS STEEL AUXILIARY DRAIN PAN THAT IS 4" DEEP & EXTENDS 4" ALL AROUND UNIT. UNIT MUST HAVE FLEX CONNECTION ON INLET & OUTLET. ROUTE INSULATED REFRIGERANT LINES TO CONDENSING UNIT LOCATED OUTSIDE. ROUTE 1" INSULATED PVC CONDENSATE DRAIN LINE TO NEAREST FLOOR DRAIN & MAINTAIN 1" AIR GAP AT TERMINATION POINT. COORDINATE WITH PLUMBING PLAN. ALL LINES MUST BE SIZED IN STRICT ACCORDANCE WITH MANUFACTURER'S SPECIFICATIONS & INSTALLED IN A MANNER AS TO PREVENT TRIPPING HAZARD.
6. CONTRACTOR SHALL INSTALL 4" DRYER VENT UP TO ROOF MOUNTED DISCHARGE. CONTRACTOR TO CUT AND PATCH SHINGLED ROOF TO ACCOMMODATE WATERPROOF INSTALLATION. PATCH/REPAIR ROOF AS NECESSARY. COLOR OF DISCHARGE LOW PROFILE ALUMINUM HOOD BY ARCHITECT.
7. CONTRACTOR SHALL INSTALL NEW WALL MOUNTED MINI SPLIT IN THIS LOCATION. VERIFY EXACT LOCATION WITH ARCHITECT PRIOR TO INSTALLATION. CONTRACTOR SHALL ROUTE CONDENSATE DRAIN LINE TO NEAREST PLUMBING VENT AND INDIRECTLY DRAIN. MAINTAIN 1" AIR GAP.
8. CONTRACTOR SHALL PROVIDE AND INSTALL A 30" 30NAR FIRE PROTECTION 1000 SERIES AUTOMATIC FIRE SUPPRESSION RANGE HOOD WITH EXTERIOR WALL FAN MODEL D1036-I-WF, 120V/1PH/60CY 5 AMPS, LIGHTS 60W/17F, GAS OUTLET - 120W/60 CY. VERIFY HOOD SIZE WITH ARCHITECT PRIOR TO ORDER. HOOD INSTALLATION SHALL COMPLY WITH STRICT ACCORDANCE WITH MANUFACTURER'S RECOMMENDATION AND NFPA 96, 17A & UL/ETL 300 LATEST EDITIONS.
9. CO SENSOR ON WALL. INTERLOCK WITH EXHAUST FANS.
10. FRESH AIR DUCT WITH MOTORIZED DAMPER AND SEPARATE MANUAL BALANCING DAMPER TO EXTERIOR WALL. LOUVER. PROVIDE MOTORIZED AND MANUAL VOLUME DAMPER FOR DUCTWORK. COLOR BY ARCHITECT. MOTORIZED DAMPER MUST BE FULLY POWERED. MECHANICAL CONTRACTOR MUST COORDINATE WITH ELECTRICAL.
11. EXTERIOR VENTILATION LOUVER, SIZED AS SHOWN, W/ GRAVITY DAMPER & 45° WEATHER HOOD. LOUVER MANUFACTURE SHALL BE GREENHECK DHA-501 OR APPROVED EQUAL. BOTTOM OF LOUVER SHALL BE 17'-0" ABOVE GRADE. REFER TO ARCHITECTURAL ELEVATIONS.
12. WALL MOUNTED PROP FAN WITH 45° WEATHER HOOD. COORDINATE EXACT LOCATION OF EXHAUST FAN WITH SUPPLEMENTED ROOF SUPPORTS. PROVIDE PUSH BUTTON ON/OFF SWITCH FOR MANUAL OPERATION OF FAN. PROVIDE LINE VOLTAGE T-STAT SO THAT FAN SHALL RUN WHEN TEMPERATURE EXCEEDS SET POINT. T-STAT SET POINT SHALL BE 95F. BOTTOM OF FAN SHALL BE 17'-0" ABOVE GRADE.
13. 40W ELECTRIC UNIT HEATER. CHROMALOX LUH-D-04-83-34 OR APPROVED EQUAL. 208/3/60. 11.2 AMPS. 1650 RPM MOTOR. MOTOR HP. UNIT HEATER SHALL BE SET TO MAINTAIN A TEMPERATURE ABOVE 40 DEF. F. IN THIS ROOM.



Stantec (Formerly Bradley, Blumhoffer & Associates)
1200 Brickyard Lane, Suite 400
Baton Rouge, LA 70802
Tel: 225-765-7400
www.stantec.com

Copyright Reserved

The Contractor shall verify and be responsible for all dimensions. DO NOT scale the drawings. The Contractor shall verify and be responsible for all dimensions. DO NOT scale the drawings. The Contractor shall verify and be responsible for all dimensions. DO NOT scale the drawings.

Consultant

By

Appd

Revision

Design Phase Acceptance

Permit/Seal



Client/Project
CITY OF NATCHITOCHES

NEW FIRE STATION NO. 3

NATCHITOCHES, LOUISIANA

Project No.: 222706059

File Name: 25-035 MECH - USE THIS ONE

Scale:

Dwn. Dgn. Ckt. 2025.09.26
YYYY.MM.DD

Title

MECHANICAL
PLAN

Revision: Sheet: 1 of 3

Drawing No.

M100



THOMPSON LUKE & ASSOCIATES, L.L.C.
10705 RIEGER RD., STE 101
BATON ROUGE, LA 70809
(225)293-9474 TLA PROJECT #25-035
Frank Saville Thompson - License No. 28854
Landon David Burns - License No. 46484